

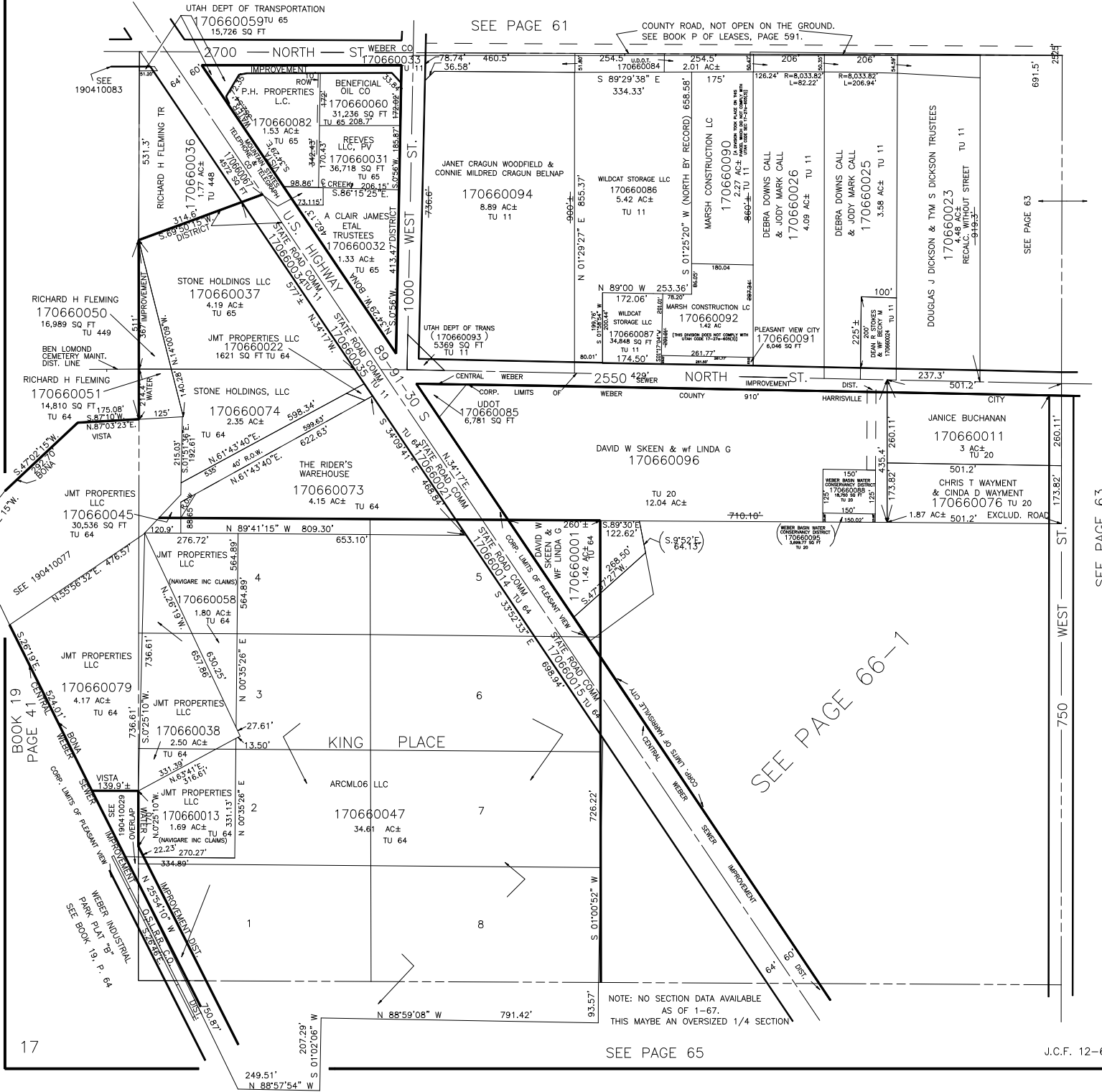
N.W. 1/4
SECTION 31, T.7N., R.1W., S.L.B. & M.

TOWNS OF HARRISVILLE & PLEASANT VIEW

TAXING UNIT: 3, 7, 11, 20, 64, 65, 448, 449

SCALE 1" = 200'

ALSO SEE P. 66-1



SEE PAGE 63

WEST ST.

WEST ST.

WEST ST.

WEST ST.